

F&J SPECIALTY PRODUCTS, INC.

The Nucleus of Quality Air Monitoring Programs

HIGH VOLUME AIR SAMPLER F&J MODEL HV-1SV.2

NOTABLE FEATURES:

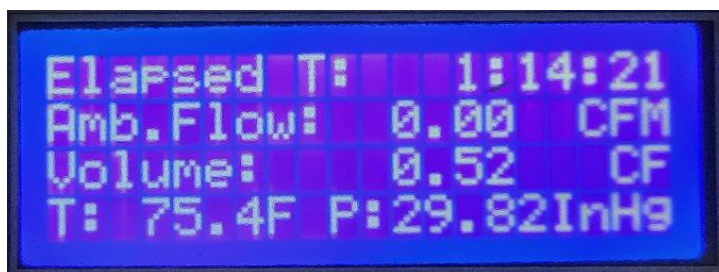
- LCD Digital Display
- Stable Base Plate with Rubber Support Feet
- Reporting of Flow Rates and Volumes to Local Air Temperature and Pressure
- Optional Reporting of Flows and Volumes to a Reference Temperature and Pressure
- Flow Adjustment via Manual Motor Speed Control
- Dual Ball bearing Motor with Independent Cooling
- 100—120VAC, 50/60Hz; single phase
- Independently cooled electronic compartment
- Accuracy: $\pm 5\%$ Full Scale (F.S.)



GENERAL DESCRIPTION:

Model HV-1SV.2 is a lightweight portable high volume air sampler. This model features manual flow regulation, a cooling fan in the electronics section of the enclosure, flow measurement reported using ambient temperature and pressure. The vacuum blower is mounted in a rigid enclosure with non-skid rubber feet. An ergonomic LCD displays illustrates the pertinent air sampling data of the air sampling measurement such as elapsed time, ambient flow, totalized volume, and ambient temperature and pressure.

The design provides for a standard 4 inch (102mm) on-board filter holder. Large diameter filter holders are available as options.



Standard Product

(Reporting of flow and volume at ambient conditions of temperature and pressure)



STP OPTION

(Reporting of flow and volume at a Reference temperature and pressure in addition to the reporting at ambient conditions)

REV: 15 October 2024

F&J HV-1SV.2 High Volume Air Sampler Specifications

SPECIFICATIONS:

PUMP TYPE:

Two-stage, dual ball-bearing, bypass type with an independent cooling system for the motor that provides thermal overload protection.

TEMPERATURE OPERATING RANGE:

14 to 140°F (-10 to 60°C)

POWER REQUIREMENTS:

100 – 120VAC; 50/60Hz at 8.5 amperes; single phase

FUSE PROTECTION: 10 amperes, slow blow fuse

HANDLE: Metal/Plastic

WEIGHT: Approximately 13.4 lbs. (6.1 kg)

DIMENSIONS: 14”L × 8.25”W × 11.00 Height*
(35.5 × 20.9 × 27.9 cm)

* Indicated with handle up position. Handle down height is 9.35”

NOISE LEVEL: Average dB 73.5 @ 1 meter

KEYPAD: 4 button

DISPLAY: LCD (4 lines x 20 characters)

DISPLAY DIMENSIONS: 3”W x 1”H (7.62cm L x 2.54cm W)

FLOW MEASUREMENT: Precision machined venturi

Combination Filter Holder Option:

A 4-inch diameter particulate filter holder is a standard; an adapter to convert to a standard combination filter holder is optional

TYPICAL MAXIMUM FLOW RATES FOR 4.0” DIAMETER FILTER PAPER:

Filter Paper Model	Flow Rates	
	CFM	LPM
FP40	18	509
FP40M	27	764
521140	21	594
AE40	21	594
213340	32	906
CP40	18	509
CP40H	8	226
Whatman 41	21	594

Available Flow / Volume Units (Factory Settable)

LPM / L
CFM / CF
M³/H / m³

OPTIONS

- 1) Filter holders
- 2) Flow rate / Volume reported to Reference T and P (Factory settable)